



AMPLUX Ws

COMBINE ALL THE FUN

Rocky trails, narrow ridges and wet meadows - LOWA's new AMPLUX Ws trail runner reliably delivers top performance on every kind of terrain. This comfortable model unites all the important features needed for tackling short, medium and long distances in one. Weighing just 490 grams and fitted with the clever LOWA®-TRAC® sole package, the 6-mm drop of the endurance runner ensures long-lasting maximum comfort for cross-country training and competitions alike.



1 Lasts specially adapted to the anatomy of women's feet.

COLOURS



Grey/arctic
320695 9004



Grey/mint
320695 9005



Black/melon
320695 9962



Melon/arctic
320695 0300



Old rose/apricot
320695 5217



Avocado/rose
320695 7931

WEIGHT

520 g/Pair (UK 8)

SUITABLE FOR

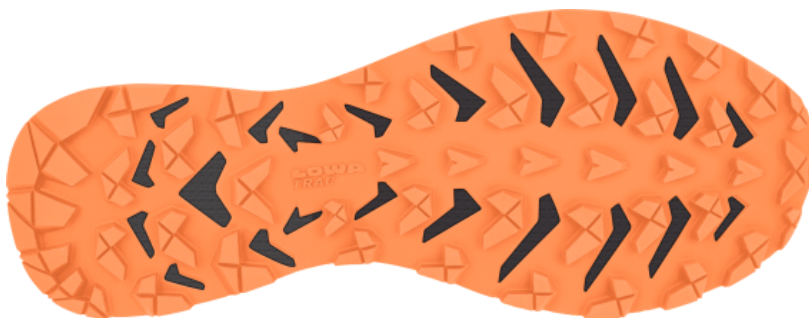
Trailrunning

The new AMPLUX Ws is designed in particular to excel on demanding terrain and deliver exceptional performance, the result of his remarkable grip, protection and stability.

SOLE

LOWA® TRAC® AGILITY

Sufficiently deep lugs bite into dirt on loose terrain for excellent grip, and a durable and grippy sole performs well over varied terrain. Bidirectional lugs enable both: quick acceleration and responsive braking.



MIDSOLE

ca. 100 % EVA

The acronym "EVA" stands for "ethylene-vinyl acetate". It corresponds to an elastomeric polymer that is used to make plastic materials. The EVA material creates soft and flexible qualities. It is primarily used in the production of shoe and shoe midsoles to provide step cushioning. Various degrees of rigidity can be achieved on the basis of the thickness employed.

INSOLE

ca. 90 %

Polyurethane (PU)

Polyurethane (PU) is a soft plastic that has very good cushioning properties and is usually used in the midsole as a result. Through the use of PU, the soles become lightweight and functionally flexible.

ca. 10 %

Fabric

Our natural and synthetic fabrics facilitate optimal warming and moisture management with the help of their usage-specific characteristics. Thanks to their structural design, they are smooth and make our products extremely comfortable.

LINING MATERIAL



A textile lining is pleasantly lightweight.

FUNCTIONS



The footwear is flexible and supports natural rolling properties as a result.



The upper material technology gives increased protection from scree and sharp rocks on every trail.



Support is delivered through our unique asymmetrically shaped upper edge which precisely reflects the ankle's anatomy.



Our lightweight carbon reinforced midsole under the forefoot, gives runners energy return at every step.



Anatomically shaped, molded heel counter guarantees stabilizing function throughout the entire run in all directions.



The LOWA® TRAC® sole system and the sticky rubber compound provides guaranteed traction, in wet or dry conditions.

DYNEVA

The triple density midsole features a cushioning DYNEVA interior that runs the length of the shoe.

UPPER MATERIAL

ca. 100 %

Synthetic

Our synthetic fabrics made of such plastics as nylon, polyester, polypropylene and elastane (Lycra) are primarily used as design elements and protection for the upper due to their abrasion resistance and tear strength.

PPE REGULATION

Please note that if it is intended to use the purchased products as personal protective equipment in accordance with Art. 3 No. 1 of Regulation (EU) 2016/425 (PPE Regulation), the user is responsible for checking the products for the presence of a corresponding certification (see technical data of the product). If the product lacks a certification required for use as personal protective equipment as defined by the PPE Regulation, the product may not be used as personal protective equipment or only for non-professional purposes.